

In the Mix: Remix

Touring June/July 2022

A digital sensory performance
for audiences 12 years and
over with PMLD



Supported using public funding by
**ARTS COUNCIL
ENGLAND**

levəJ

 **DERBYSHIRE**
County Council

ABOUT IN THE MIX : INTRODUCTION

Inspired by a digital installation called In the Mix by Darius Powell, In the Mix Remix (ITMRM) is a touring performance piece created for PMLD audiences and is also suitable for SEN schools, day centres, libraries, theatres and arts centres.

The piece is a response to Level Centre's desire to create and tour playful and interactive experiences for its learning disabled audience and wider community.

The sound and visual score is created by digital artist Darius Powell and sound designer Robin Newman of Snug Recordings.

In the Mix Remix:

- Two performance artists
- Audio-visual mix exploring colour, texture and sound featuring glowing spheres
- Approximately 15 - 20 minute performance, followed by an interactive sensory play workshop
- Age suitability: 12 years and over
- Ideal audience size of five people plus parents/carers
- Can be repeated up to three times in a day
- Can be performed in a non-theatre space

In The Mix : Remix provides an environment where audience members can use sensory stimulation to make their own personal connections and meanings. These could range from triggering memory and emotion to, perhaps, exploring connections between people, objects and sensory stimulation. As a sensory performance the audience can expect sound, strong colours and movement to enhance the senses. It will be created for people with profound multiple disabilities and we want to create something memorable.

The touring piece is funded by Arts Council England strategic touring funding.

Bookings now open for June/July 2022



**Just great fun!
I brought a group to
trial In the Mix while it
was in development,
not only did the group
enjoy it, the staff
had a whale of a
time too!**



THE CREATIVE TEAM

The concept for In the Mix : Remix has been developed by the Creative Team in collaboration with LEVEL Centre.



Digital artist: Darius Powell

Darius is a digital artist, workshop leader and producer with over 15 years professional experience creating working for exhibitions, theatre, museums, participatory arts and commercial sector. His expertise includes Augmented Reality, Virtual Reality, Projection Mapping and Interactive Installations. As an

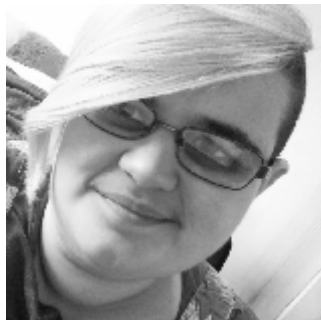
advocate for digital inclusion, Darius strives to find new ways technology can engage individuals in the co-creation of work.



Sound design: Robin Newman

Robin Newman is a music producer, composer and sound artist whose work explores the relationships between sound and spaces, both physical and suggested. He has produced work in various mediums spanning recorded productions, installation, interactive and digital mediums such as XR and Spatial Audio, with a

focus on using immersive audio to enhance narrative and environment. His work has been featured by Oculus, Magic Leap, The Eden Project, QUAD, The National Space Centre, Coventry Transport Museum and The Nottingham Festival of Science and Curiosity.



Poet: Katie Walters

Katie (Tom) is a young radical performance maker based in Coventry. A Co-Founder of disabilityarts organisation Radical Body, and an independent writer and performance poet. Katie creates interdisciplinary art that focuses on themes of disability, environment, and metamorphosis. They began their career in the

arts as a Slam Poet, winning the SLAMBassadors National Youth Slam in 2014, and competing in the prestigious Roundhouse Poetry Slam in 2017. They have performed their poetry at numerous events and worked closely with the National Autistic Society on a number of campaigns. Katie will provide the poetry and words for the performers.



Alt text/closed captions: Bella Milroy

Bella Milroy is an artist and writer who works with sculpture, drawings, photography, writing and text. She is also a portrait artist. Her work explores how we touch and make contact with the world around us, with the hand-held being of particular significance. She is interested in the duality of every-day existence, and how things can be both beautiful/painful, both interesting/dull. This

process-based practice is fundamental to her as a disabled artist, utilising and working with the significant limits and demands of living with a chronic illness. Bella will contribute a core aspect of her creative practice in the form of image descriptions, alt text and closed captions. We will invite audiences to consider the sensory elements of the artworks in new and unexpected ways.



A really engaging experience, the group loved watching different images appear and the music and lights were really soothing



Performers to be confirmed.



Fantastic activity for our disabled group to enjoy. Everybody had a great time and it was particularly good for our young people who have a lot of sensory needs.



TECHNICAL SPECIFICATIONS

Get-in:

We need two hours to set up the space ready for the performances and workshop and 1 hour following the last performance to de-install.

Dimensions:

We require a space approximately 5m x 5m for the screens and performance area, plus space for the audience. If you have a smaller space, please still get in touch, we would love to find a way to make this work so that your users can experience In the Mix : Remix.

In the Mix : Remix tours with:

2x performers
1x technical/stage manager
1x LEVEL Centre staff member where possible

We will be touring:

2x HD Projectors with 0.5 lens
2x 5m HDMI cables
2x Speakers and sub 1x PC and Monitor
2x Rear Projection Screens

We need:

- Space to park the van to unload the equipment
- 5 x 13 amp sockets or be able to use a plug extension
- A space for the performers to change and warm up
- A table
- Chairs or beanbags for audience to sit on
- Ability to switch off overhead lights

Audience:

- 12 years and over
- Specifically created for PMLD audiences and learning disabled adults.

Sensory Equipment:

- LED based sensory spheres for the participants and performers. Each sphere is rechargeable
- Additional sensory equipment

Risk Assessments:

We have risk assessments and Covid guidance in place for the tour, these will be sent to you at the time of booking.



In the Mix: Remix

LEARNING & WRAPAROUND ACTIVITIES

Kyla Hyslop, LEVEL Centre's Engagement Producer, will provide resources and materials for all venues and day centres that programme In The Mix : Remix. This will be supplemented with workshop ideas for parents, carers and venues to use following the performance.

The In the Mix : Remix performance includes a interactive workshop session immediately after the performance that includes sensory equipment inspired by In the Mix.

After the interactive workshop session, LEVEL Centre will leave workshop examples for carers and parents to use after the session.

Examples of activities include:

- An art activity which involves creating your own mini installation with concertina paper, adding in colours and images that you've seen from In The Mix : Remix.
- A performance activity which involves responding to the colours and themes from In The Mix : Remix through movement, sounds and linking those colours and themes to emotions you might associate with them.

We can facilitate additional workshops based on these ideas. If you would like the installation to be a full morning, afternoon or day of activities, contact us for more details.



“I had the chance to have a play with In the Mix while it was being developed at the Level Centre, it was full of surprises at every turn and I’m looking forward to seeing how the addition of dancers will bring the piece to life”



MARKETING

Who is In the Mix for?

In the Mix : Remix was originally created for people aged 12 and over with profound and multiple learning difficulties. There is no upper age guidance for the piece, with it's combination of bright colours, movement and sound, In the Mix : Remix is an engaging, and just as importantly, fun installation for everyone to enjoy.

What will I get?

Each performance lasts 15-20 minutes, followed by the chance for your group to explore In the Mix : Remix for themselves and use the glowing spheres to create their own connections to the patterns and sound. We'll bring along some In the Mix inspired sensory equipment to continue the story, and before we leave we'll share some additional art and performance ideas so that you can use with your group at a later stage. If you would like us to facilitate any of these activities while we're with you, just let us know in advance and we can create a bespoke package.

What space do I need?

Although we've suggested the size of area we need to position the In the Mix : Remix, because of the technical specification the piece is really flexible, so do get in touch if you're not sure if it will fit in the space you have available.

What is the capacity?

We've set the capacity to five people plus any carers for each session, but the piece has been designed so that, while one group is watching the performance, another group could be taking part in the activities, meaning that the capacity per hour could be up to 10 people plus carers.

Access support

We'll provide a visual description of In The Mix to help explain to your customers and service users what to expect. Staff from Level Centre have disability awareness and Makaton training.

What marketing support will I get?

We'll provide you with a selection of images and a short promotional video that you can use on social media to promote In the Mix on your platforms.

For social media we're using the hashtag: #InTheMixRemix. If you tag us at @LevelCentre, we will retweet and share your content.

We can also provide a pdf of a poster for In the Mix : Remix for you to overprint your details such as logo, date and booking details.

AT A GLANCE:

- **For ages 12 and over**
- **Lasts approximately an hour including performance, exploring In The Mix : Remix and sensory play**
- **Capacity is five people plus five carers for each session**
- **Art and performance workshop ideas**
- **We can repeat the experience three times a day**



In the Mix: Remix

BOOKING

The cost will vary depending on the venue and number of performances in a day. We can repeat the piece up to three times in a day with agreed breaks and time to re-set.

Day centres and SEN schools - We welcome a conversation to discuss what you can contribute.

We are open to a discussion on fees. Contact LEVEL Centre on: Tel: 01629 7349848 or email: admin@levelcentre.com

levəj

Level Centre
Old Station Close, Rowsley,
Derbyshire DE4 2EL

www.Levelcentre.com

info@levelcentre.com

Tel: 01629 734843



Supported using public funding by
**ARTS COUNCIL
ENGLAND**

levəj

